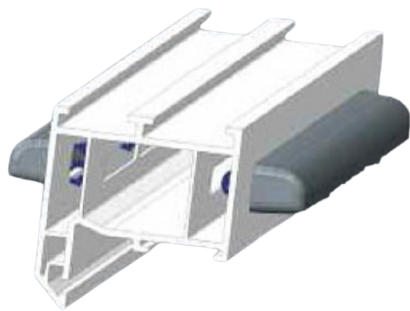


# Features and Benefits

The Slimline Ventilator will provide Trickle Ventilation in accordance with the Building Regulations 2000: Part F: Approved Document F1 October 2010 and Scottish Building Regulations October 2011 Standard 3.14.

The product is specifically designed for "Through Profile" PVC-U applications using a 10 mm routed slot, and is available in two sizes. All ventilators are "Clip" fixed with the advantage of rapid fitting to profiles.



- Spring Clip fitting (No Screws) (Saves over 1 minute per window to install).
- Unique closure mechanism provides for adjustable ventilation with a positive action.
- "BBA" Certification.
- Sash window application - "Offset" clips are available.

## Technical Information

The product consists of an internal ventilator with adjustable closures to regulate incoming air flow and an external canopy with integral fly screen.

### Internal Ventilator

- This is injection moulded in PVC-U, with UV resistant Acetal spring clips that enable the ventilators to be firmly snapped into the routed slot in the profile. The installation of this vent provides time cost savings when compared with 'screw fitting' alternatives.
- The closure plate has a positive action and multiple units in the 4000 version provide control of airflow.
- A variety of custom fixing clips are available to offset the ventilator vertically relative to the 10mm slot for applications such as sash windows, where space is at a premium. These give offsets of +/- 2mm.

### External Canopy

- This is complimentary to the interior unit and features the same materials and fixing methods. The canopy has an integral fly screen. A flat grill is available

**WINLOCK** 

UNIT B, HORTONWOOD 31, TELFORD, SHROPSHIRE, TF1 7GS

TELEPHONE: 01952 602250

FAX: 01952 602255

EMAIL: [sales@winlock.co.uk](mailto:sales@winlock.co.uk)

WEB: [www.winlock.co.uk](http://www.winlock.co.uk)

SLIMLINE TRICKLE VENTILATOR

Window  
&  
Door

Hardware  
Solutions